



Fine Arts Brass

SUITE FOR BRASS QUINTET & CONCERT BAND "Malvern Chase"

1. BUSY SHOPPING

Rue Mouffetard - Paris

With good humour
Tempo giusto ♩=144

5 *f* *secco* *mf*

10

A

17

f *mf*

24 **B**

8

C

mf

39

45

f *mf*

50

D

solo tuba cue

3

p *mf*

58

f *p*

64

2

3

mf *f*

Tuba

73 **E**

mf

Musical staff for measures 73-80 in bass clef, 2/4 time. The key signature has two flats. The music consists of eighth notes with stems pointing up. A dynamic marking of *mf* is present.

81

f

Musical staff for measures 81-87 in bass clef, 2/4 time. The key signature has two flats. The music consists of eighth notes with stems pointing up. A dynamic marking of *f* is present. Measure 87 has a 3/4 time signature change.

88 **F**

f

Musical staff for measures 88-95 in bass clef, 2/4 time. The key signature has two flats. The music consists of eighth notes with stems pointing up. A dynamic marking of *f* is present. Measure 95 has a 3/4 time signature change.

96 **G** 10 **H** 12 **I** 26

Musical staff for measures 96-111 in bass clef, 2/4 time. The key signature has two flats. The staff contains rests for measures 96-111, with box letters G, H, and I above the staff. Measure numbers 10, 12, and 26 are placed above the staff.

144 **J** 8 **K** 16

Musical staff for measures 144-168 in bass clef, 2/4 time. The key signature has two flats. The staff contains rests for measures 144-168, with box letters J and K above the staff. Measure numbers 8 and 16 are placed above the staff. Measure 168 has a fermata.

169 **L**

mf

Musical staff for measures 169-177 in bass clef, 2/4 time. The key signature has two flats. The music consists of eighth notes with stems pointing up. A dynamic marking of *mf* is present.

178

f *mf*

Musical staff for measures 178-186 in bass clef, 2/4 time. The key signature has two flats. The music consists of eighth notes with stems pointing up. Dynamic markings of *f* and *mf* are present.

187 **M** 8 **N**

f *ff*

Musical staff for measures 187-201 in bass clef, 2/4 time. The key signature has two flats. The music consists of eighth notes with stems pointing up. Dynamic markings of *f* and *ff* are present. Measure 195 has a fermata.

202

Musical staff for measures 202-207 in bass clef, 2/4 time. The key signature has two flats. The music consists of eighth notes with stems pointing up.

208 5 4 3

Musical staff for measures 208-214 in bass clef, 2/4 time. The key signature has two flats. The staff contains rests for measures 208-214, with box letters M, N, and O above the staff. Measure numbers 5, 4, and 3 are placed above the staff.

Tuba

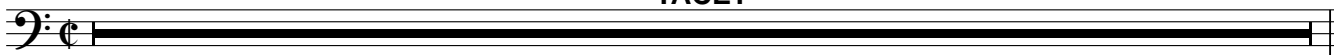
All players to appropriate percussion group:
 HANDCLAPS - STAGE RIGHT
 HANDCLAPS - STAGE LEFT
 FINGER SNAPS - CENTRE STAGE

2. BREAK DANCE

Bronx - New York

Moderato $\text{♩} = 108$

TACET

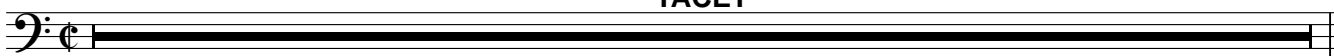


3. INSTALLATION

Tate Modern - London

Listesso

TACET

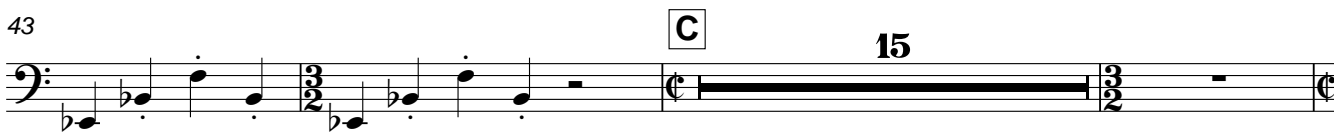


4. A WALK IN THE GARDENS

Botanical Gardens - Kyoto

Gently $\text{♩} = 80$

If needed



Tuba

61 **D**

Musical notation for measure 61, featuring a bass clef, common time signature, and a series of eighth notes with stems pointing down. The notes are Bb, Gb, Fb, Eb, and Db. The dynamic marking *mp* is placed below the first note.

66

Musical notation for measure 66, featuring a bass clef, common time signature, and a series of eighth notes with stems pointing down. The notes are Bb, Gb, Fb, Eb, and Db. The measure concludes with a 3/2 time signature change and a whole note rest.

71 **E**

Musical notation for measure 71, featuring a bass clef, common time signature, and a series of eighth notes with stems pointing down. The notes are Bb, Gb, Fb, Eb, and Db. The measure concludes with a 3/2 time signature change and a whole note rest. The dynamic marking *p* is placed below the first note.

85 **F** _{a 2}

Musical notation for measure 85, featuring a bass clef, common time signature, and a series of eighth notes with stems pointing down. The notes are Bb, Gb, Fb, Eb, and Db. The dynamic marking *f ma dolce* is placed below the first note.

90

Musical notation for measure 90, featuring a bass clef, common time signature, and a series of eighth notes with stems pointing down. The notes are Bb, Gb, Fb, Eb, and Db. The measure concludes with a 3/2 time signature change and a whole note rest.

95 **G**

Musical notation for measure 95, featuring a bass clef, common time signature, and a series of eighth notes with stems pointing down. The notes are Bb, Gb, Fb, Eb, and Db. The dynamic marking *mp* is placed below the first note, and *poco a poco dim.* is placed below the last note.

100

Musical notation for measure 100, featuring a bass clef, common time signature, and a series of eighth notes with stems pointing down. The notes are Bb, Gb, Fb, Eb, and Db. The measure concludes with a 3/2 time signature change and a whole note rest.

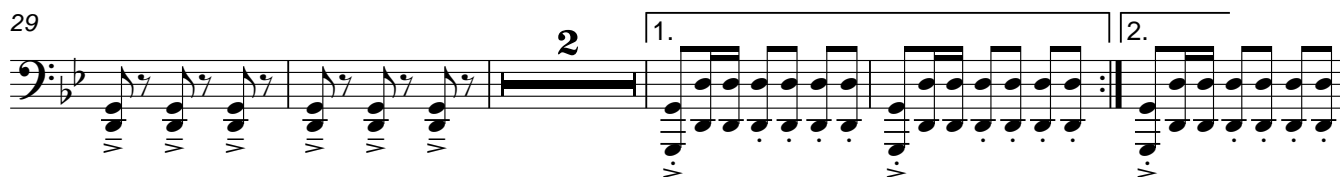
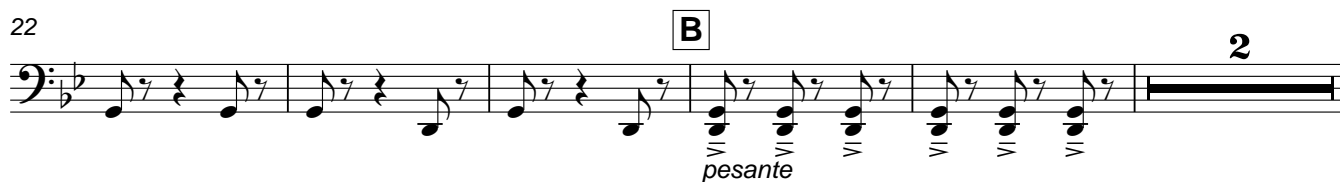
105 **H**

Musical notation for measure 105, featuring a bass clef, common time signature, and a series of eighth notes with stems pointing down. The notes are Bb, Gb, Fb, Eb, and Db. The measure concludes with a 3/2 time signature change and a whole note rest. The dynamic marking *p* is placed below the first note.

Tuba

5. TOREADORS

Plaza de Toros - Sevilla

Allegro vivace $\text{♩} = 156$ 

Tuba

52 **D**

56

61 **E**

68

75 **F**

81

87 **G** **H** **I** solo

105

111 **J**

118

125 **K**

Tuba

132

Musical staff for measure 132, featuring a bass clef and a key signature of one flat. The notation consists of a sequence of eighth notes with stems pointing up, alternating with rests.

139

Musical staff for measure 139, featuring a bass clef and a key signature of one flat. The notation includes eighth notes with stems pointing up, followed by a crescendo hairpin leading to a fortissimo (*f*) dynamic marking.

146

Musical staff for measure 146, featuring a bass clef and a key signature of one flat. The notation consists of a series of eighth notes with stems pointing up, grouped into pairs.

152

Musical staff for measure 152, featuring a bass clef and a key signature of one flat. The notation includes eighth notes with stems pointing up, followed by a double bar line with a '2' above it, and then a fortissimo (*ff*) dynamic marking.

159

Musical staff for measure 159, featuring a bass clef and a key signature of one flat. The notation includes eighth notes with stems pointing up, followed by a double bar line with a '3' above it, and then a triplet of eighth notes with stems pointing up.

166

Musical staff for measure 166, featuring a bass clef and a key signature of one flat. The notation consists of a series of eighth notes with stems pointing up, grouped into pairs.

171

Musical staff for measure 171, featuring a bass clef and a key signature of one flat. The notation includes eighth notes with stems pointing up, followed by a fortissimo (*ff*) dynamic marking and a triplet of eighth notes with stems pointing up.

Tuba

CHORALE & FANFARES

At the tomb of the Unknown Soldier

Lento ♩ = 58

8

A

pp < p > pp pp < p > p pp

Detailed description: This block contains the first line of music, measures 1 through 8. It is written in bass clef with a key signature of two flats and a 4/4 time signature. The tempo is Lento with a quarter note equal to 58 beats. The music features a melodic line with various dynamics: *pp* (pianissimo), *p* (piano), and *pp* again. There are slurs and accents throughout. A box labeled 'A' is placed above the staff at measure 5.

8

p

Detailed description: This block contains measures 9 through 14. The music continues with a melodic line, featuring a *p* (piano) dynamic marking at measure 10. The notation includes slurs and accents.

15

B

pp mp

Detailed description: This block contains measures 15 through 19. It begins with a box labeled 'B' above the staff at measure 15. The dynamics are *pp* (pianissimo) at measure 15 and *mp* (mezzo-piano) at measure 16. The music features wide intervals and slurs.

20

C **D**

pp mp p

Detailed description: This block contains measures 20 through 25. It features two boxes labeled 'C' and 'D' above the staff at measures 20 and 22 respectively. The dynamics are *pp* (pianissimo) at measure 20, *mp* (mezzo-piano) at measure 21, and *p* (piano) at measure 22. The music consists of sustained notes with slurs.

26

E

f ff

Detailed description: This block contains measures 26 through 31. It begins with a box labeled 'E' above the staff at measure 26. The dynamics are *f* (forte) at measure 26 and *ff* (fortissimo) at measure 31. The music features a crescendo and a final accent.

32

f p

Detailed description: This block contains measures 32 through 38. The dynamics are *f* (forte) at measure 32 and *p* (piano) at measure 38. The music features a decrescendo and a final slur.

39

F

pp

Detailed description: This block contains measures 39 through 45. It begins with a box labeled 'F' above the staff at measure 39. The dynamic is *pp* (pianissimo) at measure 39. The music features a melodic line with slurs.

46

G

10

Detailed description: This block contains measures 46 through 55. It begins with a box labeled 'G' above the staff at measure 46. The number '10' is written above the staff at measure 47. The music features a melodic line with a long rest in measure 47 and a final slur.

Tuba

GOOD TIMES PAST

Old Town St Louis

Moderate ragtime ♩ = 100

1 (a 2)

f

5 **A** Play on rpt. only

13

1. 2.

22 **B** Both x

31

1. 2.

39 **C** Play on rpt. only

mf

47

1. 2.

f

56 **D**

65

1. 2.