

Drum Kit
Bongos

SUITE FOR BRASS QUINTET & BAND

"Malvern Chase"

1. BUSY SHOPPING

Rue Mouffetard - Paris



With good humour
Tempo giusto ♩=144

S.D.

13 **A** 2 7

22 **B** 2 8 **C** 10

44

50 **D** 7 9

69 **E** 3 10

84

90 **F** Triangle cue B.D.cue solo

96 **G** 10

106 **H** Sus. Cym. soft heads

pp *p* *mp* *f* **4**

118 **I** S.D. Woodblock cue

mp **3** *mp* **3**

126 S.D. W.B.

3 **3**

133 **4** W.B. **2**

4 W.B. **2**

144 **J** **6** Sus. cym. **K** **10** W.B. *mf*

6 Sus. cym. **K** **10** W.B. *mf*

166 **2** **L** S.D. **9** *mf* **3**

2 **L** S.D. **9** *mf* **3**

180 **3** **3** **2**

3 **3** **2**

188 **M** **7** **N** **7** *f* **3**

M **7** **N** **7** *f* **3**

206 **5** **3/4**

5 **3/4**

213 **4** **2/4** ben in tempo To Bongos *pppp* **3**

4 **2/4** ben in tempo To Bongos *pppp* **3**

2. BREAK DANCE

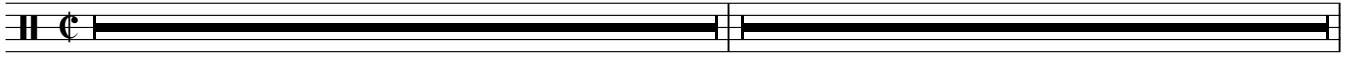
Bronx - New York

Moderato ♩ = 108

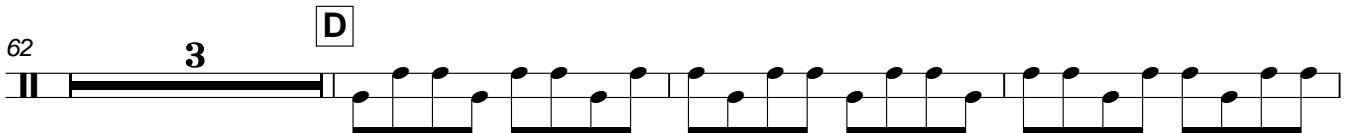
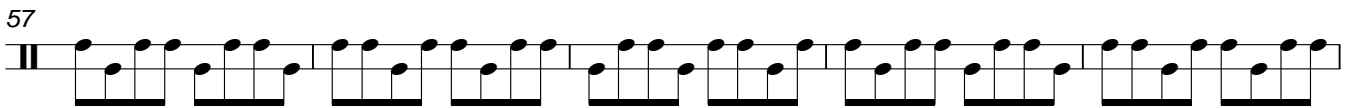
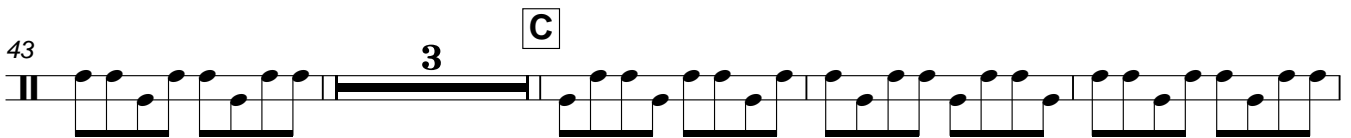
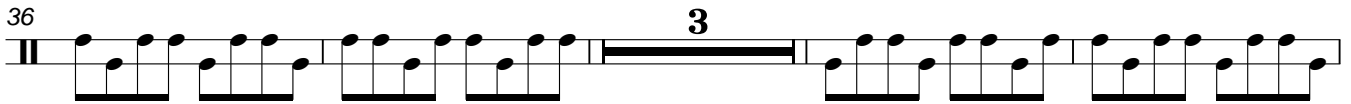
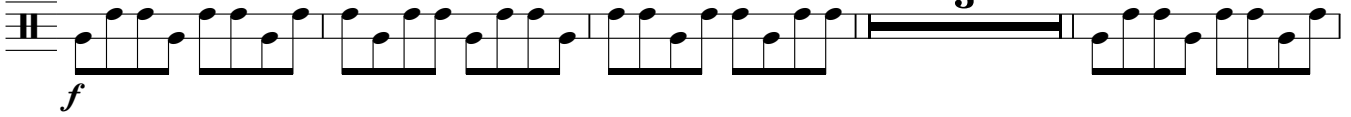
16

A

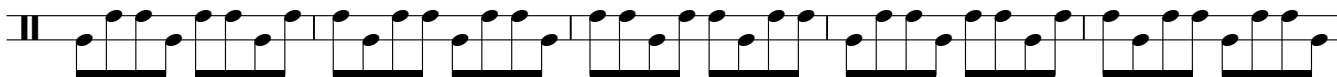
12



29 **B** Bongos



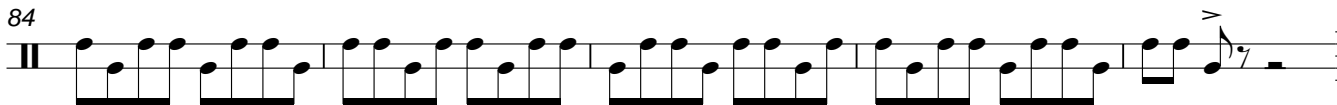
74 **E**



79 **F**

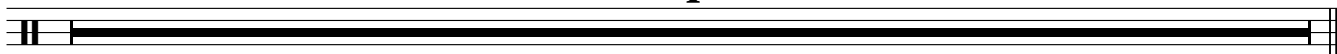


84



89 **G** To Dr.

4

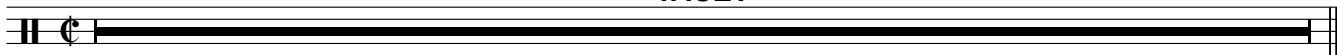


3. INSTALLATION

Listesso

Tate Modern - London

TACET



4. A WALK IN THE GARDENS

Botanical Gardens - Kyoto

Gently ♩ = 80

23 **A** 8

33 **B** (Triangle cue) 4

45 **C** 15 **D** 9

71 **E** 10 2

85 **F** Sus .cym. Soft head 3

95 **G** (Triangle cue) 2

105 **H** 5 4

pp

mf

poco a poco dim.

Detailed description: This block contains the drum notation for 'A Walk in the Gardens'. It consists of eight systems of music, each starting with a measure number and a lettered section marker (A-H). The notation includes various rhythmic patterns, rests, and dynamic markings. Section A (measures 23-30) is in common time. Section B (measures 33-36) features triangle cues. Section C (measures 45-59) and Section D (measures 60-68) are in 3/2 time. Section E (measures 71-72) is in common time. Section F (measures 85-87) includes a 'Sus .cym. Soft head' marking. Section G (measures 95-96) features another triangle cue. Section H (measures 105-108) is in common time. The piece concludes with a 'poco a poco dim.' instruction.

5. TOREADORS

Plaza de Toros - Sevilla

Allegro vivace ♩ = 156

S.D.

5

9 **A** 15 **B** Low tom-tom

27 2 2 1. S.D.

ff

f solo

Detailed description: This block contains the drum notation for 'Toreadors'. It consists of four systems of music. The first system (measures 1-4) is in 3/4 time, marked 'Allegro vivace' and 'ff', with 'S.D.' above. The second system (measures 5-8) continues the rhythmic pattern. The third system (measures 9-26) includes section markers A (measures 9-15) and B (measures 16-26), with 'Low tom-tom' and 'f solo' markings. The fourth system (measures 27-30) includes section markers 2 (measures 27-28) and 2 (measures 29-30), with '1. S.D.' above. The notation features complex triplets and accents throughout.

Drum Kit, Bongos

35 2. S.D. C

38

42

46 4

53 D

57 *ff*

61 E 15 F Low tom-tom 2

81 2 S.D.

87 G Tambourine cue *mf*

95 H

103 I

111 J

119

128 **K**

16

L S.D.

148

152

158 **M**

Low tom-tom

4

S.D.

166

170

Low tom-tom

6. CHORALE & FANFARES

At the tomb of the Unknown Soldier

Lento ♩ = 58

15 **B**

3

C S.D. solo

23 **D**

2

E

5

Clash cym.

2

35

3

F

7

46 **G**

9

2

rit.

7. GOOD TIMES PAST

Old Town St Louis

Moderate ragtime ♩ = 100

3 S.D. **A** Both x

11

20 1. 2.

B

29

2

1.

38 2.

C

Both x

47

1.

2.

56

D

Both x

65

1.

2.